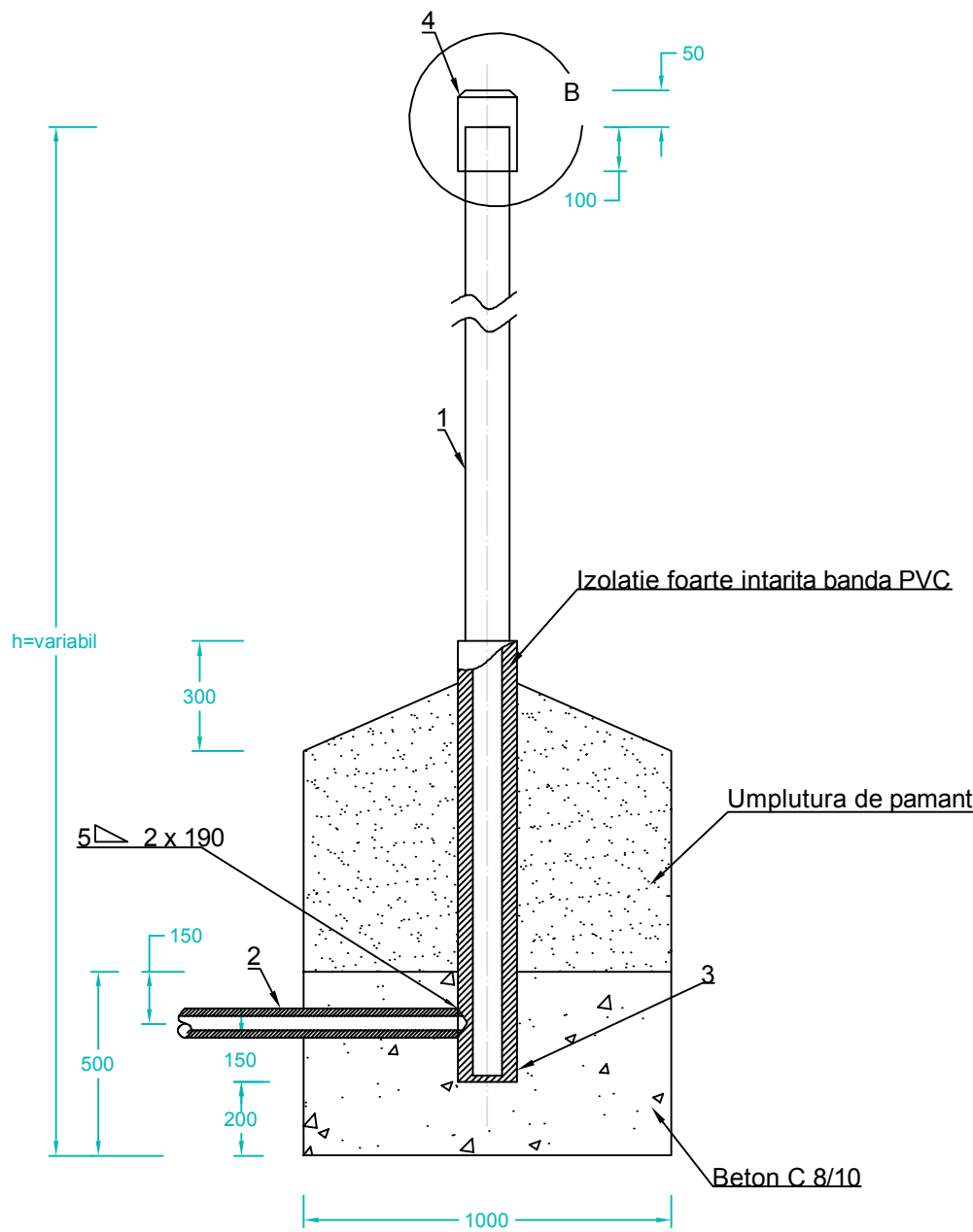
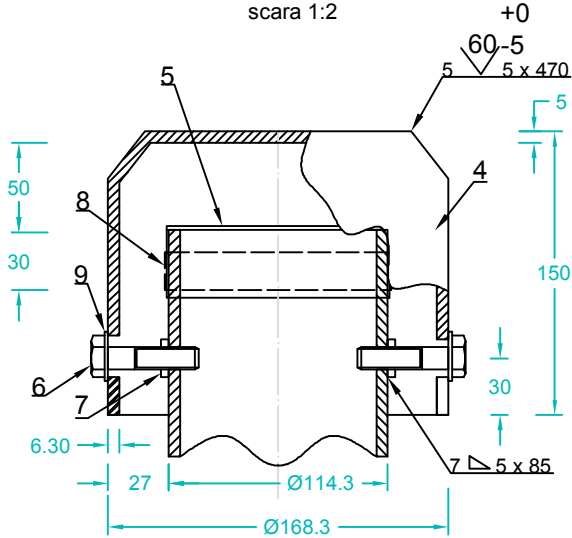


DETALIU DISPOZITIV DE AERISIRE

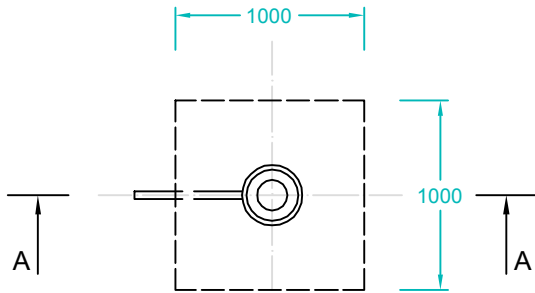
Sectiune A - A
scara 1:20



Detaliu B
scara 1:2



Vedere in plan
scara 1:2



| h (m) | 3.90m | 4.40m | 4.90m | 5.40m | 5.90m | Volum beto |
|---------------|-------|-------|-------|-------|--------|-------------|
| Greutate (Kg) | 74.90 | 83.20 | 91.50 | 99.80 | 108.10 | 0.50m³ / bu |

| Poz. | DENUMIRE | STAS | BUC. | MATERIAL | OBSERVATII |
|------|------------------|---------------------|------|-------------------------------|--------------------------------------|
| 1 | TEAVA AERISIRE | SR EN ISO 3183/2013 | 1 | L 245N | Ø114.3 x 4 x h |
| 2 | RACORD | SR EN ISO 3183/2013 | 1 | L 245N STAS 8185-88 | Ø60.3 x 3.6mm |
| 3 | FUND DREPT | | 1 | S235 JR STAS 8183:80 | 5 x 120 x 120 mm SR EN 10029:2011 |
| 4 | CAPAC | SR EN ISO 3183/2013 | 1 | L 245N | Ø168.3 x 6.30 x 150 |
| 5 | SITA "DAVIS" | SR ISO 3310-1:2000 | 1 | | 140 ochiuri /cm² |
| 6 | SURUB M16 x 46 | SR EN ISO 4016:2011 | 2 | S235 JR SR EN 10083-2:2007 | |
| 7 | PIULITA B M16 | SR EN ISO 4034:2013 | 2 | S235 JR SR EN 10083-2:2007 | |
| 8 | COLIER FALTUIT | | 1 | | Ø30 x 1.0 x 350mm |
| 9 | SAIBA GROWER N16 | SR 7666-2:1994 | 2 | S235 J | |

NOTA:

- Pentru fundatii se va folosi beton C 8/10
- Umplutura de pamant va fi bine compactata in straturi de 10-20 cm
- Sita "Davis" se compune din doua tesaturi suprapuse din sarma de 0.3.....0.4 mm grosime si 144 ochiuri/cm².
- Tesatura din sarma aleasa 0.5 corespunde conditiilor de mai sus avand sarma cu grosimea 0.34 mm cu 142 ochiuri/cm².
- Sudurile vor fi executate electric cu electrozi E35.2 B SR EN 499.

| | | | | |
|---|------------------|-----------|-----------------------|-------------------------------------|
| Verificator/ Expert | Nume | Semnatura | Cerinta | Referat / Expertiza Nr. / Data |
| S.C. SNIF PROIECT S.A. Targoviste Numar de inmatriculare J15/925/2005 | | | | Beneficiar: CONPET S.A. PLOIESTI |
| Specificatie | Nume | Semnatura | Scara: 1:20 1:2 | Pr. nr. 309 |
| Sef proiect | Ing. Costea Paul | | | Faza PT+CS+D |
| Desenat | Ing. Radu Florin | | Data: 2015 | Pl. nr. 43 |
| Proiectat | Ing. Costea Paul | | | |
| Intocuire conducta de transport titer Ø12" si Ø14" Cartojani-Ploiesti in zonele: Crivat-Catunu pe o lungime de cca. 550m+30m foraj orizontal subtraversare DN 1A Bucuresti-Ploiesti, loc. Ghimpati - traversare rau Colentina pe o lungime de cca. 500m si loc. Stantau Gheorghe - Crevedia Mica, pe o lungime de cca. 1.100m, cu un total de 2.180m pe fir | | | | Detaliu dispozitiv de aerisire |